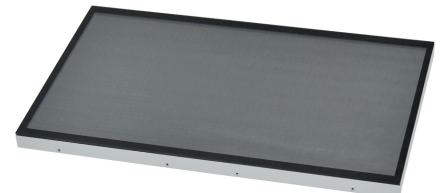
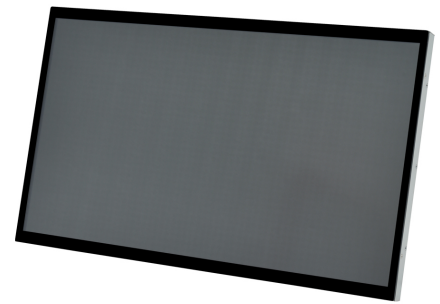


23.8 inch LCD Touch Monitor, Open Frame

Model: SKT-238H-CBK03-PSEL

23.8 inch LCD Touch Monitor, Open Frame, 2mm Tempered Capacitive Touch screen, Support additional Glass Cover 5mm with 0mm gap
LCD Resolution 1920*1080, Brightness 1000cd/m2 with Cooling Fans, VGA/HDMI, USB Touch, DC 12V



Seleniko 03,S.L.

PUBLISHED DATE: 2025-01-02

www.seleniko.com

Open Frame Touch Monitor Parameters

Specifications		
Model Number	SKT-238H-CBK03-PSEL	
Total parameter	Diagonal Size	23.8 inch a-Si TFT-LCD, LCM
	Aspect Ratio	16:9
	Enclosure Color	Black
	Video Input	VGA/HDMI
	Speakers	Optional
Mechanical	Monitor Dimensions	547×328×52mm
	VESA Holes (mm)	75×75 mm, 100×100 mm
LCD Panel	Active Area(mm)	527.5 (H) × 297 (V)
	Resolution	1920×1080 @60Hz
	Dot Pitch(mm)	0.088×0.264 mm
	Viewing angle(Typ.)(CR≥10)	85/85/80/80 (Typ.)(CR≥10)
	Contrast (Typ.)(TM)	1000:1 (Typ.)(TM)
	Brightness (typical)	LCD Panel: 1000 cd/m ² (Typ.)
		PCAP: 900 cd/m ² (Typ.)
	Response Time (Typ.)(Tr/Td)	14 (Typ.)(Tr+Td)
	Support Color	16.7M 72% NTSC
Backlight MTBF(hr)	WLED, 50K hours	
Touchscreen	Touch Technology	PCAP Touch, Capacitive Touch Screen
	Input Methods	Finger
		Gloved hand
		Passive stylus
	Number of Touches	Single - Touch and 10 Multi Touch
	Glass Thickness	2mm Tempered Glass, Anti Glare, Anti UV Support additional Glass Cover 5mm
	Light Transmission	90%
	Response Time	8 ms
	Life Span	Over 50 million touches in one location
	Positional Accuracy	± 1.5mm
	Touch interface	USB
RS232(Optional)		
Operating System	Windows XP, Windows 7, 10, Linux, Android	
Power	Power Consumption (W)	DC 12V /5A ,DC head 5.0x2.5MM
	Input Voltage	100-240 VAC, 50-60 Hz
	MTBF	50000 hr at 25°C
Environment	Operating Temp.	-20~60°C
	Storage Temp.	-20~70°C
	Operating RH:	20%~80%
	Storage RH:	10%~90%
Accessories	Packing List	1 x Touch Monitor
		1 x Power Switching Adapter
		1 x Power Cable
		1 x USB Cable
		1 x HDMI Cable
		Rear Mount brackets
Warranty	Warranty Period	1 Year Free Warranty
	Technical Support	Lifetime

Intended usage

Monitor capable of directly connecting to and designed for use with an automatic data processing machine of heading 8471 (HS-CODE: 8528521000).

Application

Product is intended only for OEM (Original Equipment Manufacturer) application.
 Product used for application on industrial control gaming, transportation, finance, retail...

Mechanical Drawing

