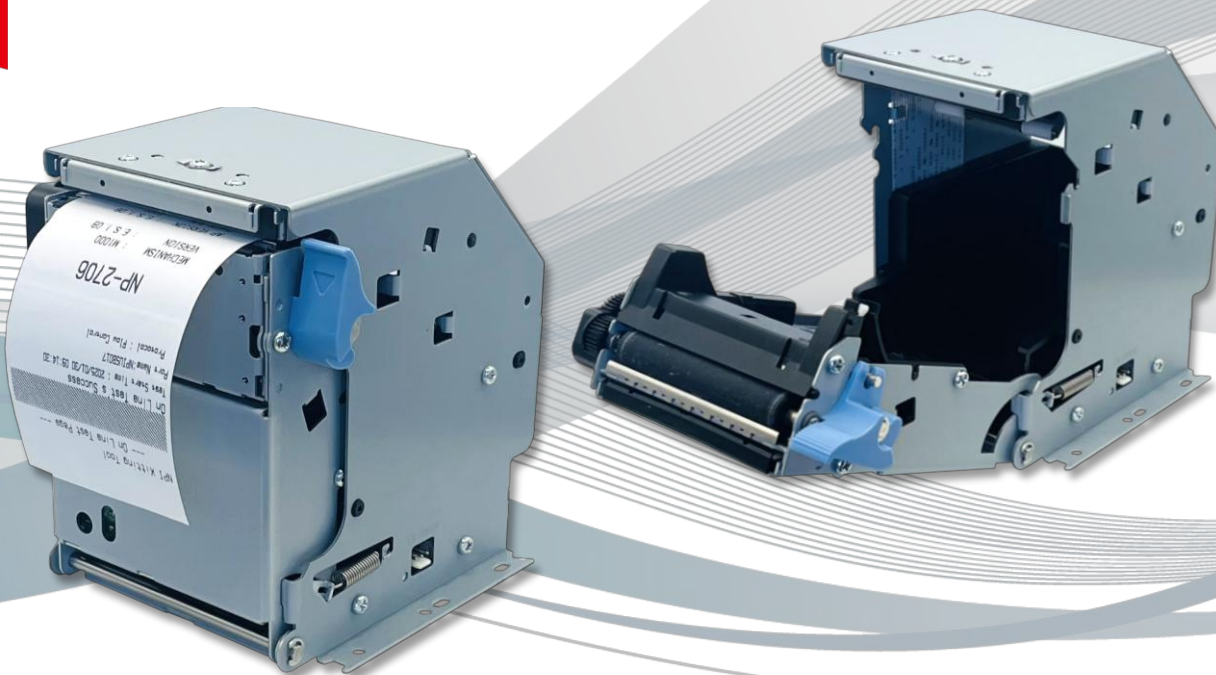


# NP-2706D / NP-2706U

New



## ► CHARACTERISTIC

**2inch**

**DC24V**

**USB**

**Serial**

## ► SPECIFICATION

Model name	NP-2706D	NP-2706U
Printing method	Direct line thermal dot	
Print speed	250 mm/sec. (at max.)	
Dots density	8 dots/mm (203 dpi)	
Gray scale printing	32 gray scale	
Number of dots/line	448dots	
Print width	56 mm (at max.)	
Paper width	58 mm	
Paper thickness	59 to 75 µm	
Paper diameter	83 mm (at max.)	
Reliability	200 million pulses, 200 km, 2 million cuts	
Operating Temperature /Humidity	-15 to 60°C / 10 to 80%	
Character	International, English, Greek, Polish, Russian, Scandinavian, Turkish, Arabic, Hebrew, Thai, Chinese, Korean, Japanese	
Barcode/QRcode	UPC-A, UPC-E, EAN-13, EAN-8, CODE39, ITF, CODABAR, CODE128, CODE93, ISBN, Industrial 2 of 5, Matrix 2 of 5, NEC Matrix, Customer barcode, MSI Code, EAN-128(GS1-128), GS1 DataBar Ominidirectional, GS1 DataBar Truncated, GS1 DataBar Limited, GS1 DataBar Expanded / QR Code (model2) , Split QR codes (model2), Micro QR code, PDF417, Micro PDF417, Aztec Code, MaxiCode, DataMatrix, GS1 DataBar Stacked, GS1 DataBar Stacked Omnidirectional, GS1 DataBar Expanded Stacked EAN-8 Composite, EAN13 Composite, UPC-A Composite, UPC-E Composite, GS1-128 Composite, GS1 DataBar Omnidirectional Composite, GS1 DataBar Truncated Composite, GS1 DataBar Limited Composite, GS1 DataBar Expanded Composite, GS1 DataBar Stacked Composite, GS1 DataBar Stacked Omnidirectional Composite, GS1 DataBar Expanded Stacked Composite, GS1 QR code, GS1 Aztec Code, GS1 DataMatrix	
Interface	USB 2.0 full speed and serial (RS-232C)	USB 2.0 full speed
Cutter	Full cut and partial cut (by the command)	
Operating voltage	DC 24 V	
External dimensions	100.0 <sup>(W)</sup> x 112.0 <sup>(D)</sup> x 120.0 <sup>(H)</sup> mm	